

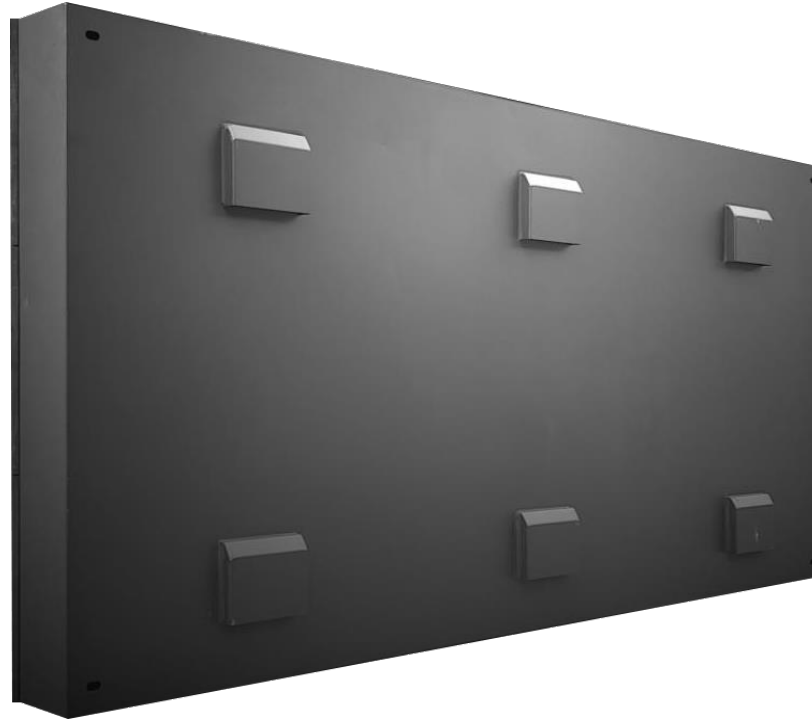


# SUPREME X Series

## Outdoor Digital Signage

### HIGH BRIGHTNESS LED

Outdoor optimization for your business



High visibility for clear  
More concise communication



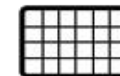
Sunlight  
Viewable Image



Weather Proof



Front Removal  
Of Module



Integrated Cabinet

# SUPREME X

Series

FULLY SEALED CABINET

The SUPREME X series provides bright, vibrant images through high-resolution surface mount LED technology in 3-10 mm pixel pitches.

## FEATURE SET

- Fully sealed cabinet, Single section or large multi-sections for fast installation.
- Sealing glue on the back of the module to protect electronic devices from corrosion.
- Different mounting clips according to different installation requirements
- Module disassembled from the front for easy maintenance.
- The maximum brightness can reach 10000 nit.

## SERIES TECHNICAL SPECIFICATIONS

<b>Estimated LED Lifetime</b>	100,000+ hours
<b>Refresh Rate</b>	3840 Hz
<b>Color Processing</b>	16 bit
<b>Brightness</b>	6000-10000 nit
<b>Dimming Capability</b>	256 levels
<b>Power</b>	110-220 VAC, 50/60Hz
<b>Operating Temperature</b>	-30°C to 50°C with 99% RH non-condensing
<b>Compliance Information</b>	UL/ FCC compliant
<b>Warranty Coverage</b>	3 Years



Pylon



Pole



Monument

The SUPREME X series has three sizes of modules that can meet various size requirements of customers.

### Metric size



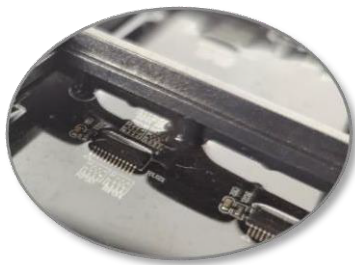
### SUPREME X

**Module size:**

320mmx320mm (1.05ftx1.05ft)

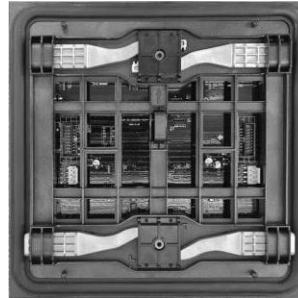
**Pixel pitch:**

5/6.67/8/10 mm



Back gluing

### Metric size



### SUPREME X

**Module size:**

250mmx250mm (0.82ftx0.82ft)

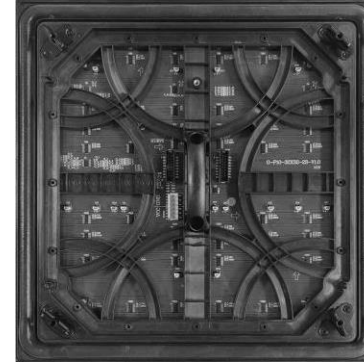
**Pixel pitch:**

2.98/3.91/4.81 mm



Front removed rotary lock

### British size



### SUPREME X

**Module size:**

1ftx1ft (304.8mmx304.8mm)

**Pixel pitch:**

3.81/5.08/6.35/9.525 mm



Front removed gear lock



## BRITISH SIZE

# SUPREME X

**Module size:**

1ftx1ft (304.8mmx304.8mm)

**Pixel pitch:**

3.81/5.08/6.35/9.525 mm

## MODEL NUMBER GUIDE

Series code

MB: British size

Pixel Pitch

Module configuration(W\*H)

SF: single face

DF: double face

PRODUCT MODE	SUPREME X	SUPREME X	SUPREME X	SUPREME X
Pixel Pitch (mm)	3.81	5.08	6.35	9.525
Pixel Density (dots)	68,889	38,750	24,800	11,022
LED Type	SMD1921	SMD2727	SMD2727	SMD2727
Module Dimensions (mm)	304.8x304.8	304.8x304.8	304.8x304.8	304.8x304.8
Module Matrix (dots)	80x80	60x60	48x48	32x32
Video Rate (Hz)	60	60	60	60
Color Processing (bit)	16	16	16	16
Refresh rate (Hz)	3840	3840	3840	3840
Max. consumption (w/m <sup>2</sup> )	600-800	600-800	600-800	600-800
Brightness (nit)	6000-8000	8000-10000	8000-10000	8000-10000
Ingress Protection	IP65	IP65	IP65	IP65

# SUPREME X

Series

THREE SIZES OF MODULE

## BRITISH SIZE

# SUPREME X

**Module size:**

1ftx1ft (304.8mmx304.8mm)

**Pixel pitch:**

3.81/5.08/6.35/9.525 mm

- After calculating the size you want to installation, use this chart to determine the corresponding display size.
- This is the size of single section. Large size need multi-sections .
- Additional sizes are available as a special order.

### DISPLAY WIDTH

### DISPLAY HEIGHT

Active Area Dimensions (ft)		DISPLAY WIDTH										
		4'	5'	6'	7'	8'						
	Matrix SUPREME -9	128	160	192	224	256						
	Matrix SUPREME X-	192	240	288	336	384						
	Matrix SUPREME X-	240	300	360	420	480						
	Matrix SUPREME X-	320	400	480	560	640						
					1	2	3	4	5	6	7	8
2'	64	96	120	160	2							
3'	96	144	180	240	3							
4'	128	192	240	320	4							

## METRIC SIZE

# SUPREME X

**Module size:**

320mmx320mm (1.05ftx1.05ft)

**Pixel pitch:**

5/6.67/8/10 mm

## MODEL NUMBER GUIDE

Series code

MA: Metric size  
(320x320mm)

Pixel Pitch

Module configuration(W\*H)

SF: single face  
DF: double face

PRODUCT MODE	SUPREME X	SUPREME X	SUPREME X	SUPREME X
Pixel Pitch (mm)	5.00	6.67	8.00	10.00
Pixel Density (dots)	40,000	22,500	15,625	10,000
LED Type	SMD2727	SMD2727	SMD2727	SMD2727
Module Dimensions (mm)	320x320	320x320	320x320	320x320
Module Matrix (dots)	64x64	48x48	40x40	32x32
Video Rate (Hz)	60	60	60	60
Color Processing (bit)	16	16	16	16
Refresh rate (Hz)	3840	3840	3840	3840
Max. consumption (w/m <sup>2</sup> )	600-800	600-800	600-800	600-800
Brightness (nit)	8000-10000	8000-10000	8000-10000	8000-10000
Ingress Protection	IP65	IP65	IP65	IP65

# SUPREME X

Series

THREE SIZES OF MODULE

## METRIC SIZE

# SUPREME X

Module size:

320mmx320mm (1.05ftx1.05ft)

Pixel pitch:

5/6.67/8/10 mm

- After calculating the size you want to installation, use this chart to determine the corresponding display size.
- This is the size of single section. Large size need multi-sections .
- Additional sizes are available as a special order.

## DISPLAY WIDTH

## DISPLAY HEIGHT

Active Area Dimensions (mm)					1280	1600	1920	2240	2560	
640	Matrix SUPREME X				128	160	192	224	256	
	Matrix SUPREME X				160	200	240	280	320	
	Matrix SUPREME X				192	240	288	336	384	
	Matrix SUPREME X				256	320	384	448	512	
	64	80	96	128	2	3	4	5	6	7
960	96	120	144	192	3	4	5	6	7	8
1280	128	160	192	256	4	5	6	7	8	

## METRIC SIZE

# SUPREME X

**Module size:**

250mmx250mm (0.82ftx0.82ft)

**Pixel pitch:**

2.98/3.91/4.81 mm

## MODEL NUMBER GUIDE

Series code

MA: Metric size  
(250x250mm)

Pixel Pitch

Module configuration(W\*H)

SF: single face  
DF: double face

PRODUCT MODE	SUPREME X	SUPREME X	SUPREME X
Pixel Pitch (mm)	2.98	3.91	4.81
Pixel Density (dots)	112,896	65,536	43,264
LED Type	SMD1515	SMD1921	SMD1921
Module Dimensions (mm)	250x250	250x250	250x250
Module Matrix (dots)	84x84	64x64	52x52
Video Rate (Hz)	60	60	60
Color Processing (bit)	16	16	16
Refresh rate (Hz)	3840	3840	3840
Max. consumption (w/m <sup>2</sup> )	600-800	600-800	600-800
Brightness (nit)	5000-6000	6000-8000	6000-8000
Ingress Protection	IP65	IP65	IP65



# SUPREME X

Series

THREE SIZES OF MODULE

## METRIC SIZE

# SUPREME X

**Module size:**

250mmx250mm (0.82ftx0.82ft)

**Pixel pitch:**

2.98/3.91/4.81 mm

- After calculating the size you want to installation, use this chart to determine the corresponding display size.
- This is the size of single section. Large size need multi-sections .
- Additional sizes are available as a special order.

## DISPLAY WIDTH

## DISPLAY HEIGHT

Active Area Dimensions (mm)				1000	1250	1500	1750	2000	2250	2500			
Matrix SUPREME X-				208	260	312	364	416	468	520			
Matrix SUPREME X-				256	320	384	448	512	576	640			
Matrix SUPREME X-				336	420	504	588	672	756	840			
				1	2	3	4	5	6	7	8	9	10
500	104	128	168	2									
750	156	192	252	3									
1000	208	256	336	4									
1250	260	320	420	5									
1500	312	384	504	6									